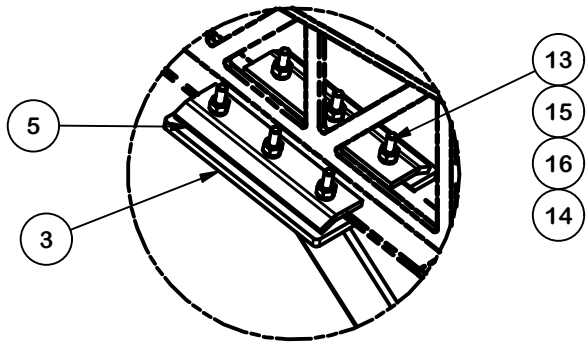
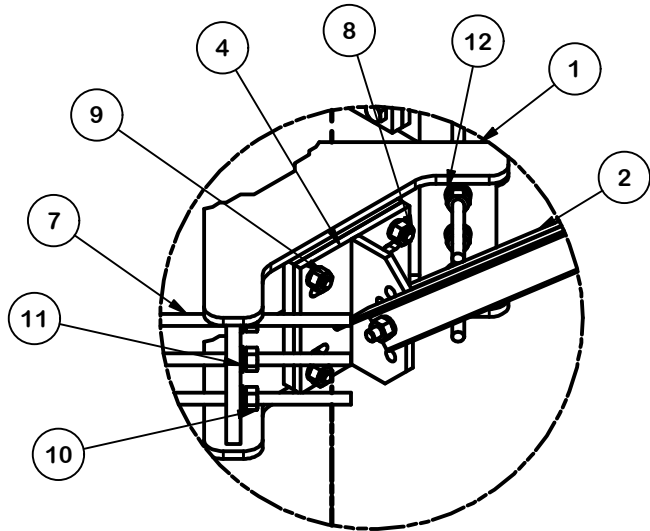
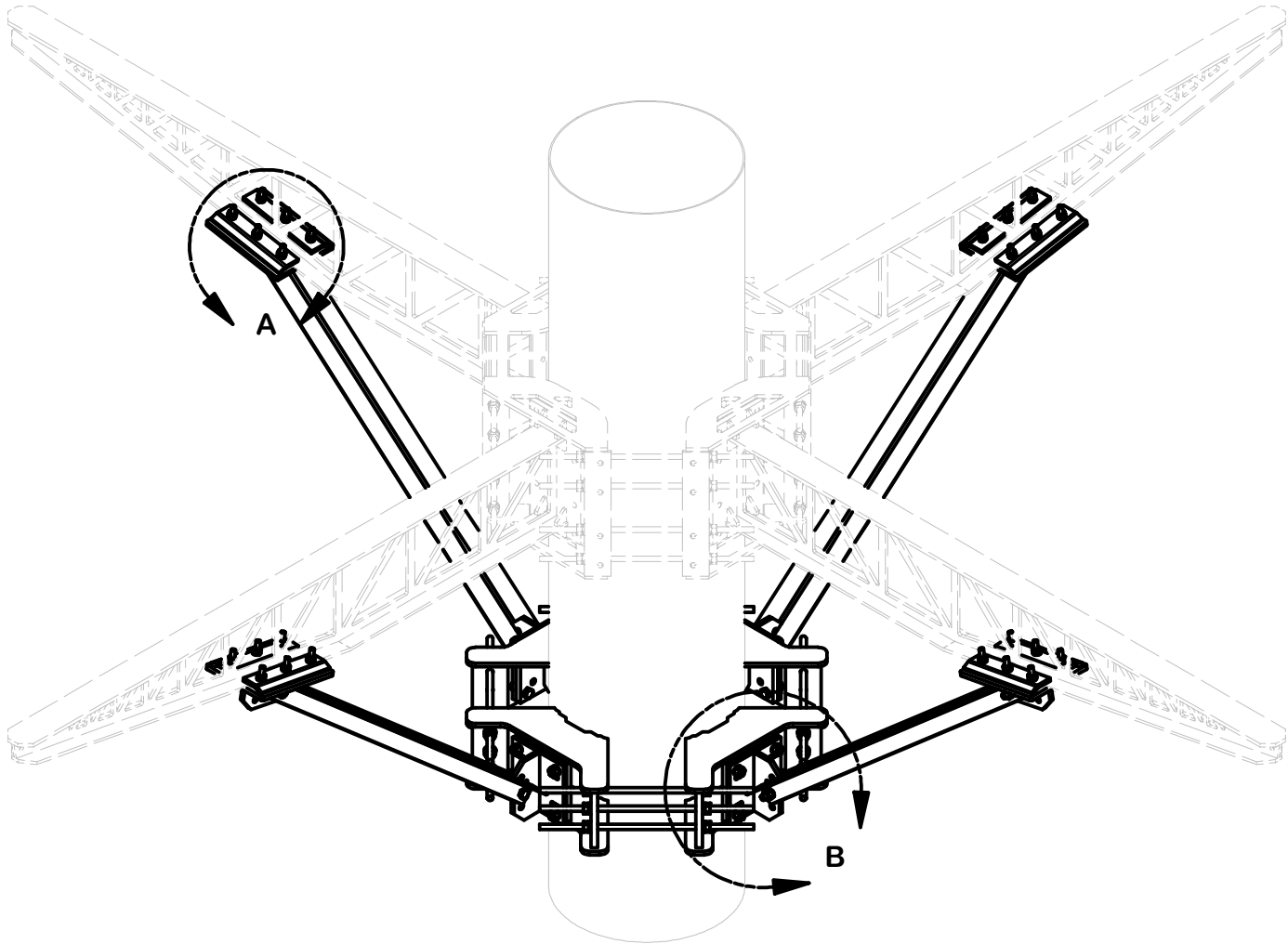


NOTE:
1.) INSTALL F4P-PRK PRIOR OR AT THE SAME TIME
TO EQUIPMENT INSTALL



DETAIL A



DETAIL B

PARTS LIST						
ITEM	QTY	PART NO.	PART DESCRIPTION	LENGTH	UNIT WT.	NET WT.
1	4	X-UQB4	QUAD BRACKET WELDMENT		61.80	247.19
2	8	X-253993	PLATFORM REINFORCEMENT KIT ANGLE	52 25/32 in	14.33	114.65
3	4	X-FPTBW	T-BRACKET WELDMENT		13.60	54.40
4	4	X-TBW	T-BRACKET WELDMENT		13.60	54.40
5	8	X-FPTBB	3/8" MILL PLATE (A572/A709 GR. 50)	11 in	3.42	27.39
6	12	G58R-48	5/8" x 48" THREADED ROD (HDG.)		4.18	50.18
7	12	G58R-24	5/8" x 24" THREADED ROD (HDG.)		2.09	25.09
8	24	A582114	5/8" x 2-1/4" HDG A325 HEX BOLT	2 1/4 in	0.31	7.50
9	24	G58NUT	5/8" HDG HEAVY 2H HEX NUT		0.13	3.12
10	24	A58NUT	5/8" HDG A325 HEX NUT		0.13	3.12
11	48	G58LW	5/8" HDG LOCKWASHER		0.03	1.25
12	24	A58FW	5/8" HDG A325 FLATWASHER		0.03	0.82
13	24	G1203	1/2" x 3" HDG HEX BOLT GR5 FULL THREAD	3 in	0.22	5.21
14	24	G12NUT	1/2" HDG HEAVY 2H HEX NUT		0.07	1.72
15	24	G12FW	1/2" HDG USS FLATWASHER	3/32 in	0.03	0.82
16	24	G12LW	1/2" HDG LOCKWASHER	1/8 in	0.01	0.33
					TOTAL WT. #	633.00

TOLERANCE NOTES

TOLERANCES ON DIMENSIONS, UNLESS OTHERWISE NOTED ARE:
SAWED, SHEARED AND GAS CUT EDGES ($\pm 0.030"$)
DRILLED AND GAS CUT HOLES ($\pm 0.030"$) - NO CONING OF HOLES
LASER CUT EDGES AND HOLES ($\pm 0.010"$) - NO CONING OF HOLES
BENDS AND ANGLES ARE $\pm 1/2$ DEGREE
ALL OTHER MACHINING ($\pm 0.030"$)
ALL OTHER ASSEMBLY ($\pm 0.060"$)

PATENT INFORMATION: WWW.SITEPRO1.COM/PATENTS

PROPRIETARY NOTE:
THE DATA AND TECHNIQUES CONTAINED IN THIS DRAWING ARE PROPRIETARY INFORMATION OF VALMONT INDUSTRIES AND CONSIDERED A TRADE SECRET. ANY USE OR DISCLOSURE WITHOUT THE CONSENT OF VALMONT INDUSTRIES IS STRICTLY PROHIBITED.

DESCRIPTION

QUAD FORTRESS KICKER SUPPORT

CPD NO.

NCS

DRAWN BY

ADB 10/22/2024

ENG. APPROVAL

10/24/2024

CLASS

81

SUB

02

DRAWING USAGE

CUSTOMER

CHECKED BY

JET 10/24/2024



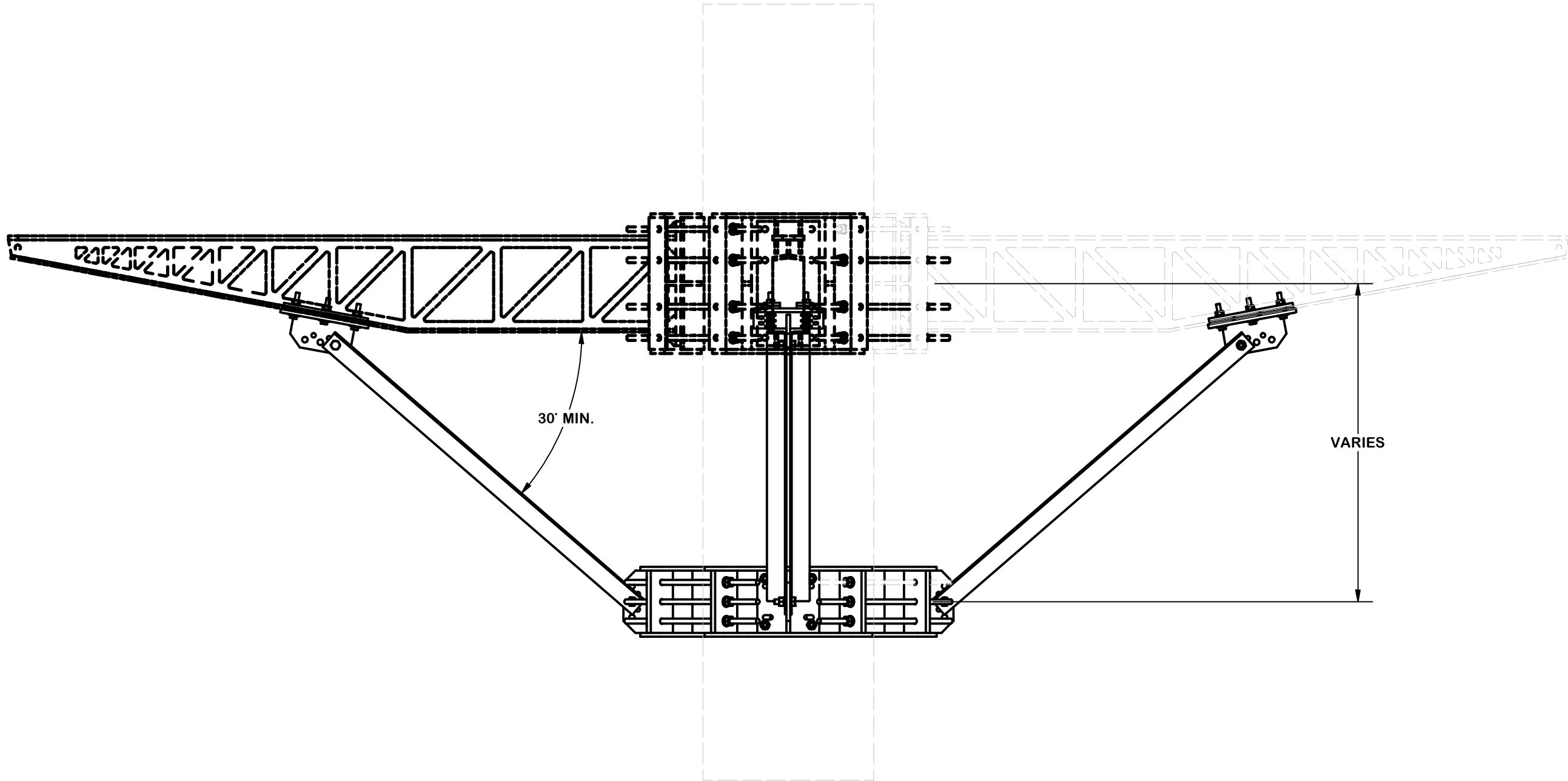
Engineering
Support Team:
sp1engineering@valmont.com

PART NO.

F4P-PRK

DWG. NO.

F4P-PRK



TOLERANCE NOTES

TOLERANCES ON DIMENSIONS, UNLESS OTHERWISE NOTED ARE:
SAWED, SHEARED AND GAS CUT EDGES ($\pm 0.030"$)
DRILLED AND GAS CUT HOLES ($\pm 0.030"$) - NO CONING OF HOLES
LASER CUT EDGES AND HOLES ($\pm 0.010"$) - NO CONING OF HOLES
BENDS AND ANGLES ARE $\pm 1/2$ DEGREE
ALL OTHER MACHINING ($\pm 0.030"$)
ALL OTHER ASSEMBLY ($\pm 0.060"$)

PATENT INFORMATION: WWW.SITEPRO1.COM/PATENTS

PROPRIETARY NOTE:
THE DATA AND TECHNIQUES CONTAINED IN THIS DRAWING ARE PROPRIETARY INFORMATION OF VALMONT INDUSTRIES AND CONSIDERED A TRADE SECRET. ANY USE OR DISCLOSURE WITHOUT THE CONSENT OF VALMONT INDUSTRIES IS STRICTLY PROHIBITED.

DESCRIPTION

QUAD FORTRESS KICKER SUPPORT

CPD NO.		DRAWN BY		ENG. APPROVAL	
NCS		ADB 10/22/2024		10/24/2024	
CLASS	SUB	DRAWING USAGE		CHECKED BY	
81	02	CUSTOMER		JET 10/24/2024	

SITE
PRO

1

A valmont COMPANY

Engineering
Support Team:
sp1engineering@valmont.com

PART NO.	F4P-PRK
DWG. NO.	F4P-PRK